

A-Mount™

PV solar solutions

ArcelorMittal's ground mounted solutions are designed and engineered for each customer's site specific conditions to minimize the field installation labor and completely eliminate welding, drilling or other on-site fabrication processes. Thanks to our in-house vertically integrated manufacturing capabilities, ArcelorMittal is able to control the quality of each manufacturing step from the selection of the raw material such as Magnelis, up to the validation of the structure design based on customer project needs.



Bankability

We offer the financial securities with group support to make your project bankable

Durability

Our structures are manufactured with the highest materials quality & standards to provide a long life of your assets

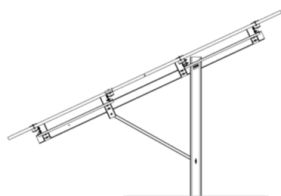
Services

We provide full support from development phase up to the maintenance and join you on all the project activities

Technical specifications

General features	
Structure type	South facing ground mounted fixed tilted structure
Modules supported	cSi, FS6
Modules compatibility	Mono-facial & Bi-facial
Modules configuration	2 in portrait, 3 in portrait, 4 in landscape
String voltage	1000 / 1500 V
Table length	Customizable as per site requirements
Tilt angle	10° - 35°
Temperature range	-30°C +60°C
Structure	
Architecture	2P / 3P / 4L: Mono / Bi post
Ground clearance	0.8 m minimum
Module fixation	Self-grounded clamp
Materials	Steel
Coatings	Atmospheric conditions: C1 to C4 (Pregalv, HDG, Magnelis) Post Protection: design based on geotechnical survey
Design loads	
Codes and standard	EN 1991, EN 1993
Wind loads	Structure adapted to site specific conditions
Snow loads	Structure adapted to site specific conditions
Installation	
Number of posts per MWp	Nominal 185 posts / MWp
Type of posts	C posts
Type of foundations	Post ramming (with or without predrilling) or concrete slab
Ramming tolerances	N/S: ±25 mm; E/W: ±25 mm; Z: ±30 mm; Tilt: ±1.5°; Twist: ±1°
In fiel operations	No specific operations on site (no welding, no driling ...)
On site training & commissioning	On site supervisor dedicated to each project
Warranties	
Structure	10 years on structure

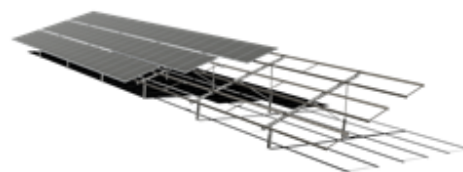
A-Mount™ 2P Mono post



A-Mount™ 2P Bi post



A-Mount™ 3P Bi post



Magnelis®